

SyTech RIOS Ai Mobile Command - Catalog System

Command Vehicle with Multiple Workstations

Optional/Recommended Support Items:

- Three Limited Warranty
- Engineering Design
- On-Site Training
- Network Routing and Configuration
- Site Survey and Verification
- Purchasing and Allocation
- Server Installation
- Additional Installation
- Tone Control Interfacing
- Testing and Audio Matching
- Programing Out-of-Network Interface

1U Touchscreen Monitor, Keyboard and Mouse
R-MON-TS

Shielded Speaker Module
R-SPK

RIOS AI-16 Series Server
R-SERV-AI16

RIOS Sixteen Port I/O Module
R-IOC-AI16

RIOS Walk-Up Radio Interface Panel
R-RCK-WALK

RIOS AC/DC Power Module
R-PWR-ACDC

Requires continuous AC or DC power in



Additional Workstations as Required

RIOS Client Durabook Workstations
R-CON-RUGID-PCK



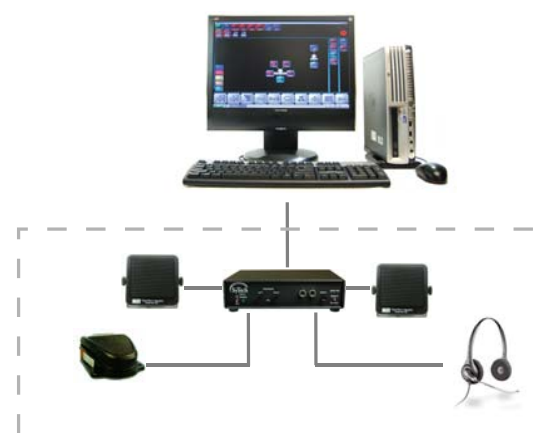
CCU2 Desktop Audio Control Package
R-CON-PACK
(Included with R-CON-RUGID-PCK)

RIOS Client Workstation Console
R-CON-PCK

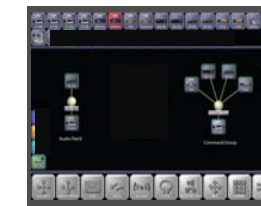


CCU2 Desktop Audio Control Package
R-CON-PACK
(Included with R-CON-PCK)

RIOS Client Computer Connection Port and Software
R-SFT-CP-CLNT
(Customer Supplied Machine)



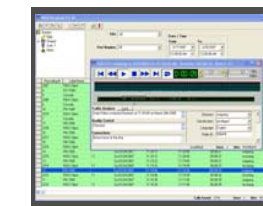
CCU2 Desktop Audio Control Package
R-CON-PACK



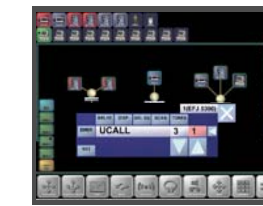
RIOS Client Software Seat
(Included with R-SERV-3000)



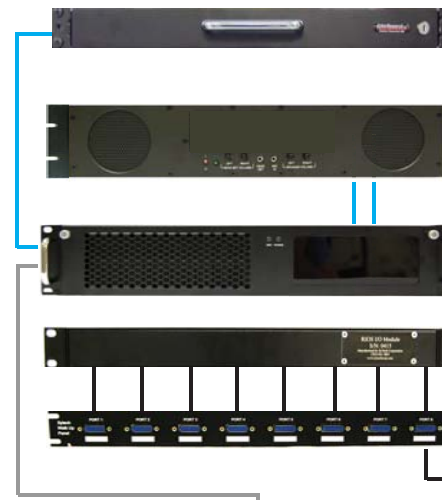
RIOS Paging Module
(Server and Clients)
R-SFT-PGNG



RIOS Recording and Archiving
(Server Only)
R-SFT-REC



Remote LMR Control
(Server and Clients)
R-SFT-RCU



Remote Radio Control Cables
R-CAB-RCU

OR

Standard Interface Cables
R-CAB-S

Standard Interface Cables - TBD
R-CAB-S



Walk-Up Radio
(From Participating Agency)

Radio Network Entry Points
(Customer Supplied with Power)

Please List
Radio Model and Make
Standard Cable Length: 6 -10 ft

1. _____
2. _____
3. _____
4. _____
5. _____
6. _____
7. _____
8. _____
9. _____
10. _____
11. _____
12. _____
13. _____
14. _____
15. _____
16. _____

RIOS can interface to all types of portable, mobile and fixed site (trunk or conventional) radio makes and models.

SyTech offers remote radio control for a variety of radios. Please discuss these options with a SyTech RIOS engineer.

To Antenna Bank
(Customer Supplied)



SyTech Propriety

System Illustration: For System Comprehension Only
Actual Products, Configuration and Images May Change without Notification
Drawing may or may not be complete. Working drawing, not a final representation.

Items to be Confirmed (not inclusive):

- UPS Power to System
- Available Rackspace: 4 - 10 units, minimum.
- Acceptable signal strength and capacity at location
- Antenna Equipment, Apparatus and Separation