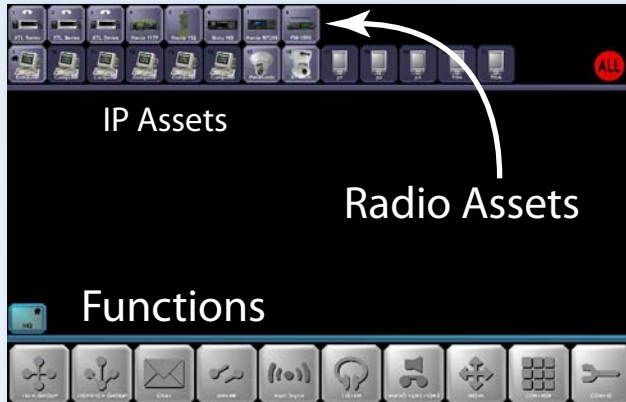
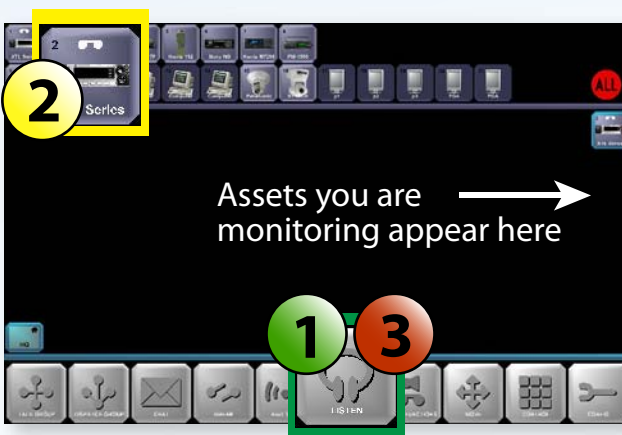


1. Power on the PC and monitor. If a Windows password is required, the factory default is "rios".

3. Log into RIOS with your password. By default, the RIOS password is "1". The RIOS workspace, gateways, functions, sites and monitor column will appear as below.



4. To listen to an asset, follow the Three-Step pattern with the Listen Function.



To discontinue monitoring an asset, repeat using the Listen Function and selecting the asset and deselecting Listen.

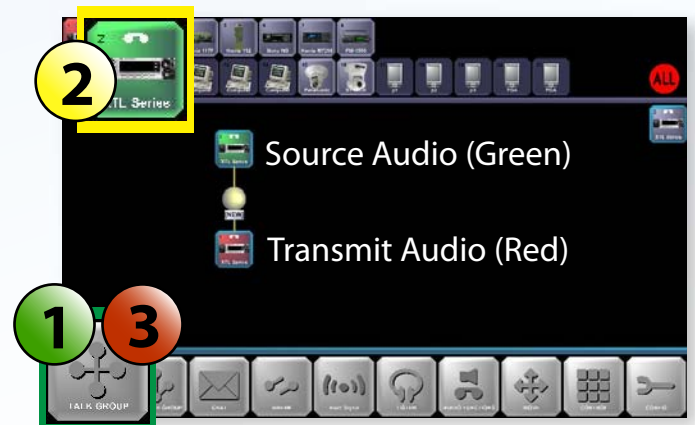
2. Start RIOS from the desktop by double clicking the RIOS icon.



The RIOS Three-Step Operational Pattern

- 1 Select the Function you wish to perform.
- 2 Select the Assets you wish to affect.
- 3 Deselect the SAME Function to confirm.

5. To create a patch, follow the Three-Step pattern with the Talkgroup Function.



To remove the patch, use the Break Function and the RIOS Three-Step Pattern. Select the yellow node to select the group.