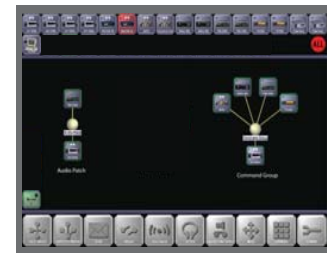


# RIOS System F19

## Mobile Command Vehicle: Ai16 Gateway Series

- System Support:**  
 Engineering Design  
 On-Site Training  
 Network Routing and Configuration  
 Site Survey and Verification  
 Purchasing and Allocation  
 Server Installation  
 Additional Installation  
 Tone Control Interfacing  
 Zone 2: \$4500  
 Testing and Audio Matching  
 Programming Out-of-Network Interface  
**Software Enhancements**  
[See Quote for Details](#)  
**PBX Integration**  
[See PBX Integration Quote for Details](#)



RIOS Client Software Seat  
(Included with R-SERV)



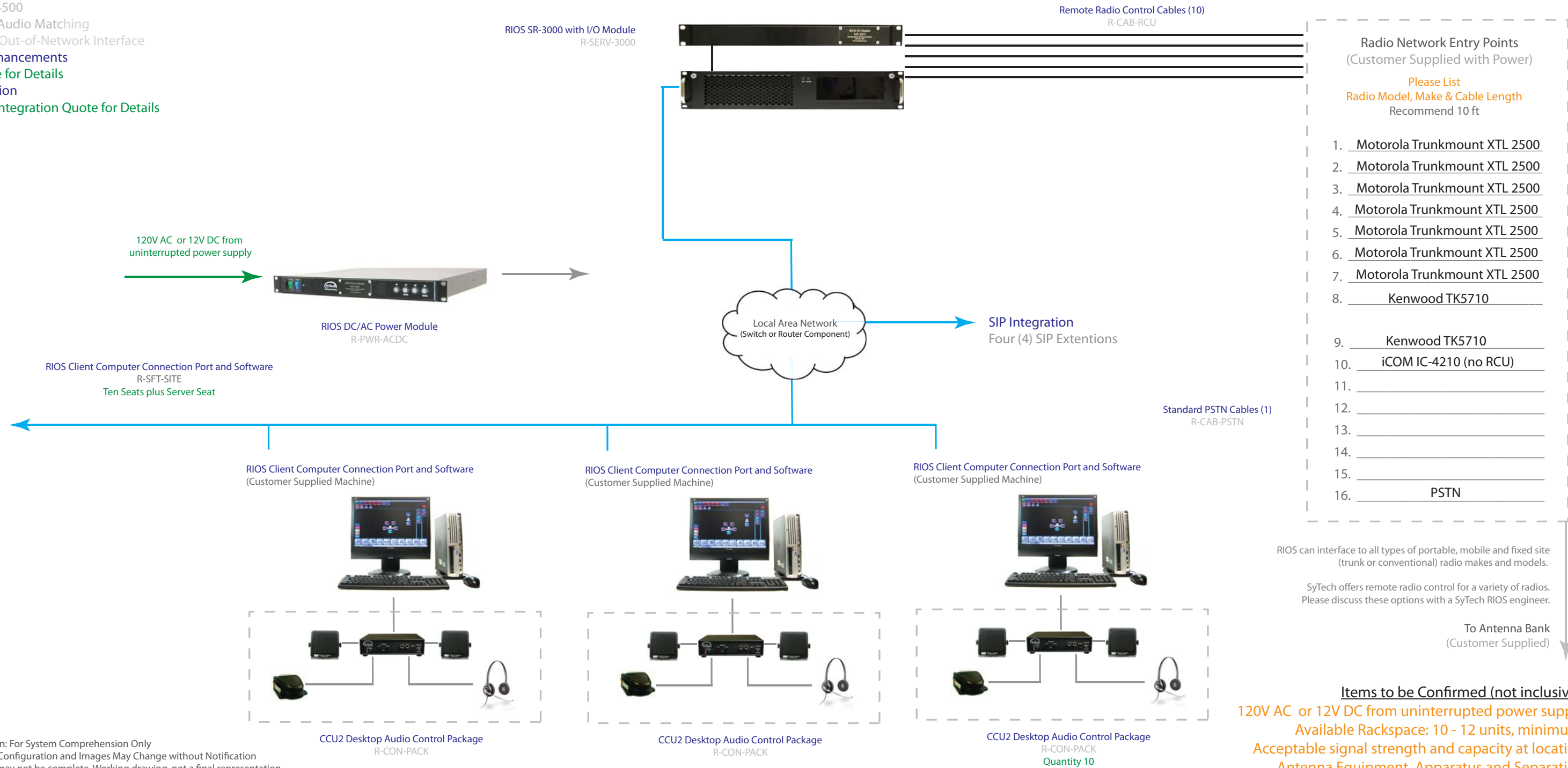
RIOS Paging Module  
(All Workstations)  
R-SFT-PGNG



RIOS Recording and Archiving  
(Server Only)  
R-SFT-REC



Remote LMR Control  
(Server and Clients)  
R-SFT-RCU



- Radio Network Entry Points**  
(Customer Supplied with Power)  
 Please List  
 Radio Model, Make & Cable Length  
 Recommend 10 ft
- Motorola Trunkmount XTL 2500
  - Motorola Trunkmount XTL 2500
  - Motorola Trunkmount XTL 2500
  - Motorola Trunkmount XTL 2500
  - Motorola Trunkmount XTL 2500
  - Motorola Trunkmount XTL 2500
  - Motorola Trunkmount XTL 2500
  - Kenwood TK5710
  - Kenwood TK5710
  - iCOM IC-4210 (no RCU)
  - 
  - 
  - 
  - 
  - 
  - PSTN

RIOS can interface to all types of portable, mobile and fixed site (trunk or conventional) radio makes and models.  
 SyTech offers remote radio control for a variety of radios. Please discuss these options with a SyTech RIOS engineer.

To Antenna Bank  
(Customer Supplied)

**Items to be Confirmed (not inclusive):**  
 120V AC or 12V DC from uninterrupted power supply  
 Available Rackspace: 10 - 12 units, minimum.  
 Acceptable signal strength and capacity at location  
 Antenna Equipment, Apparatus and Separation

SyTech Propriety  
 System Illustration: For System Comprehension Only  
 Actual Products, Configuration and Images May Change without Notification  
 Drawing may or may not be complete. Working drawing, not a final representation.