

# SyTech RIOS Ai Mobile Command

Command Vehicle with three Notebook Workstations

## Optional/Recommended Support Items:

- Three Limited Warranty
- Engineering Design
- On-Site Training
- Network Routing and Configuration
- Site Survey and Verification
- Purchasing and Allocation
- Server Installation
- Additional Installation
- Tone Control Interfacing
- Testing and Audio Matching
- Programing Out-of-Network Interface

1U Touchscreen Monitor, Keyboard and Mouse  
R-MON-TS

Shielded Speaker Module  
R-SPK

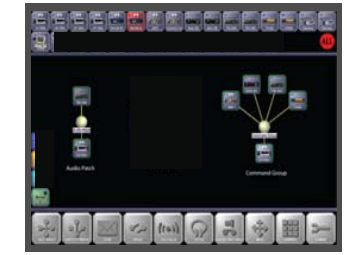
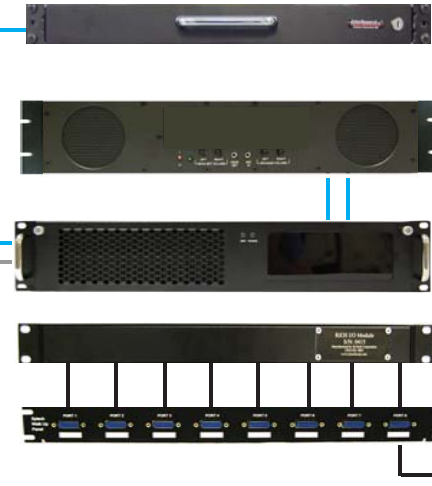
RIOS SR-3000 Series Server  
R-SERV-3000

RIOS Sixteen Port I/O Module  
R-IOC-AI16

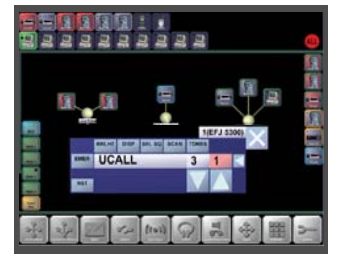
RIOS Walk-Up Radio Interface Panel  
R-RCK-WALK

RIOS AC/DC Power Module  
R-PWR-ACDC

Continuous AC or DC power in



RIOS Client Software Seat  
(Included with R-SERV-3000)



Remote LMR Control  
(Server and Clients)  
R-SFT-RCU

Remote Radio Control Cables  
R-CAB-RCU

Standard Interface Cables  
R-CAB-S

OR



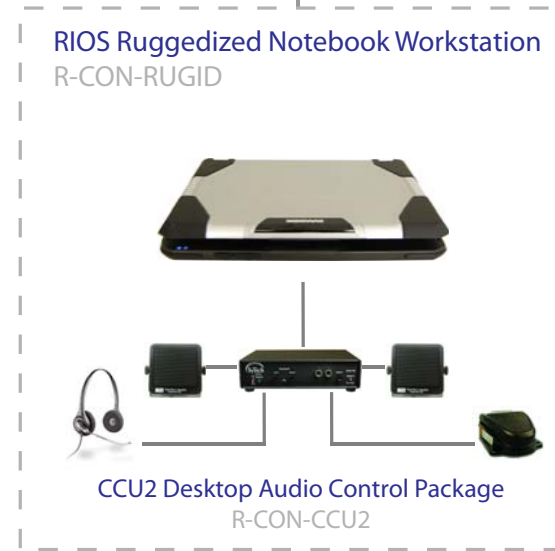
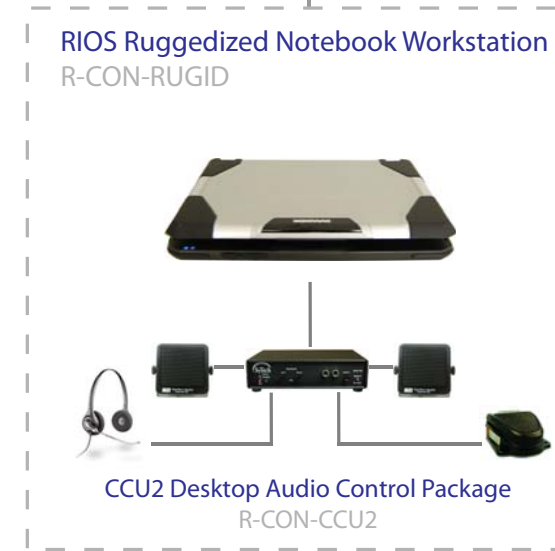
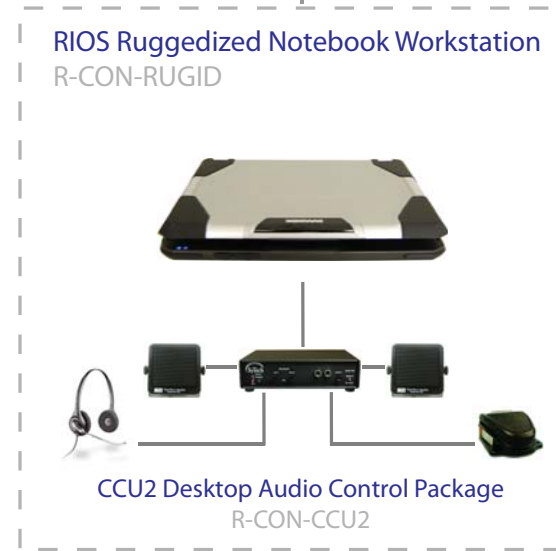
Walk-Up Radio  
(From Participating Agency)

Standard Interface Cables - TBD  
R-CAB-S

Radio Network Entry Points  
(Customer Supplied with Power)

Please List  
Radio Model and Make  
Standard Cable Length: 6 -10 ft

1. \_\_\_\_\_
2. \_\_\_\_\_
3. \_\_\_\_\_
4. \_\_\_\_\_
5. \_\_\_\_\_
6. \_\_\_\_\_
7. \_\_\_\_\_
8. \_\_\_\_\_
9. \_\_\_\_\_
10. \_\_\_\_\_
11. \_\_\_\_\_
12. \_\_\_\_\_
13. \_\_\_\_\_
14. \_\_\_\_\_
15. \_\_\_\_\_
16. \_\_\_\_\_



RIOS can interface to all types of portable, mobile and fixed site (trunk or conventional) radio makes and models.

SyTech offers remote radio control for a variety of radios. Please discuss these options with a SyTech RIOS engineer.

To Antenna Bank  
(Customer Supplied)

**SyTech Propriety**

System Illustration: For System Comprehension Only  
Actual Products, Configuration and Images May Change without Notification  
Drawing may or may not be complete. Working drawing, not a final representation.

**Items to be Confirmed (not inclusive):**

- UPS Power to System
- Available Rackspace: 4 - 10 units, minimum.
- Acceptable signal strength and capacity at location
- Antenna Equipment, Apparatus and Separation