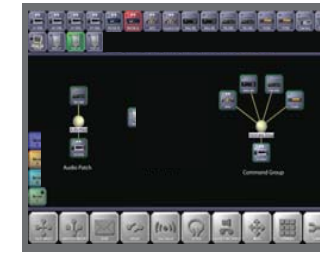


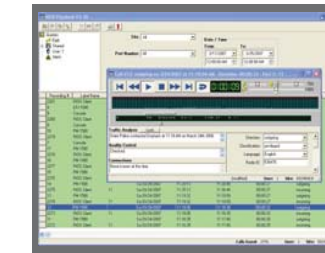
SyTech RIOS SRX Mobile Command SUV with two Notebook Workstations

Optional/Recommended Support Items:

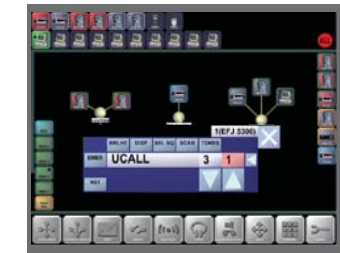
- Three Year Limited Warranty
- Engineering Design
- On-Site Training
- Network Routing and Configuration
- Site Survey and Verification
- Purchasing and Allocation
- Server Installation
- Additional Installation
- Tone Control Interfacing
- Testing and Audio Matching
- Programing Out-of-Network Interface



RIOS Client Software Seat
(Included with R-SERV-RUGID)



RIOS Recording and Archiving
(Server Only)
R-SFT-REC



Remote LMR Control
(Server and Clients)
R-SFT-RCU

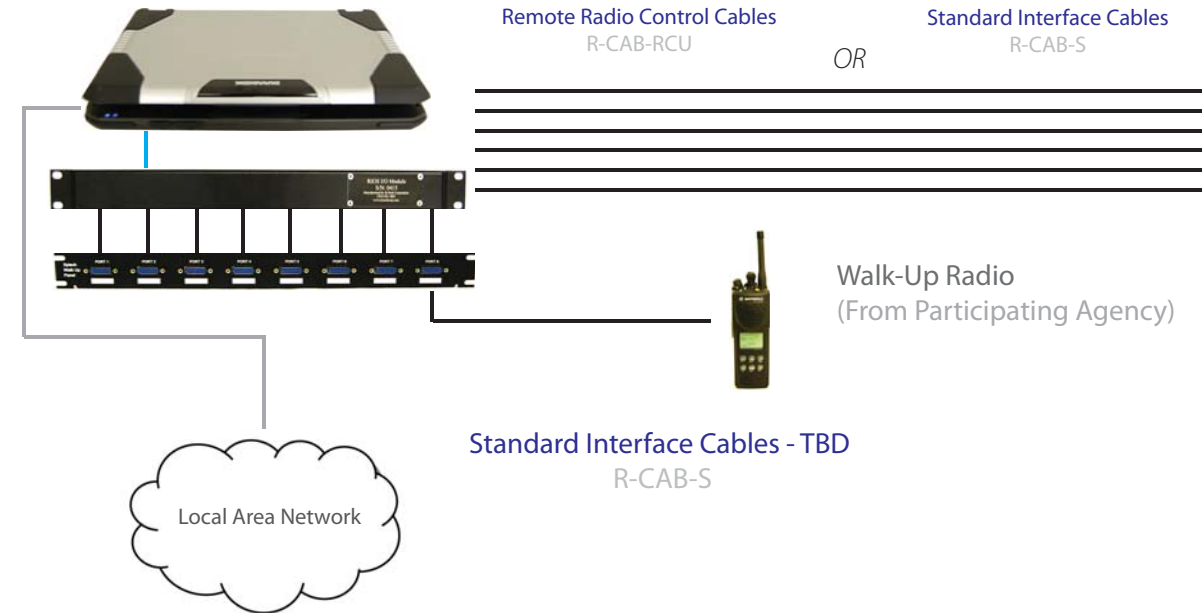


RIOS Touchscreen Controller
R-SERV-RUGID

RIOS SRX SuperRIB I/O Chassis
R-IOC-SRX

RIOS SuperRIB
(Quantity Specify)
R-SR-V0

RIOS Walk-Up Radio Interface Panel
R-RCK-WALK



Radio Network Entry Points
(Customer Supplied with Power)

Please List
Radio Model and Make
Standard Cable Length: 6 -10 ft

1. _____
2. _____
3. _____
4. _____
5. _____
6. _____
7. _____
8. _____
9. _____
10. _____
11. _____
12. _____

Walk-Up Radio
(From Participating Agency)

Standard Interface Cables - TBD
R-CAB-S



RIOS can interface to all types of portable, mobile and fixed site
(trunk or conventional) radio makes and models.

SyTech offers remote radio control for a variety of radios.
Please discuss these options with a SyTech RIOS engineer.

To Antenna Bank
(Customer Supplied)

Items to be Confirmed (not inclusive):
Continuous Power to System
Available Rackspace: 3 - 6 units, minimum.
Acceptable signal strength and capacity at location
Antenna Equipment, Apparatus and Separation

SyTech Propriety

System Illustration: For System Comprehension Only
 Actual Products, Configuration and Images May Change without Notification
 Drawing may or may not be complete. Working drawing, not a final representation.