

SyTech RIOS SRX Mobile Command SUV with seven RIOS Client Computer Connections Includes RIOS Wide-Area Network Option

Optional/Recommended Support Items:

- Extended Warranty
- Engineering Design
- On-Site Training
- Network Routing and Configuration
- Purchasing and Allocation
- Programing Out-of-Network Interface

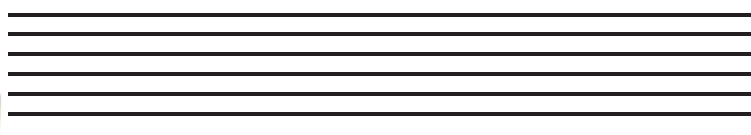
RIOS SRX Package
R-SRX-MCPCK1

RIOS Touchscreen Controller
R-SERV-RUGID

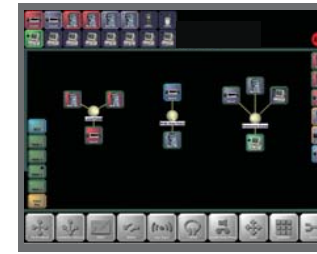
RIOS SRX SuperRIB I/O Chassis
R-IOC-SRX

RIOS SuperRIB
(Quantity Specify)
R-SR-V0

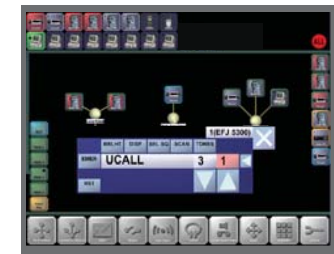
RIOS Configured Router
R-NET-RTR-X



Remote Radio Control Cables
R-CAB-RCU



RIOS Client Software Seat
(Included with R-SERV-RUGID)



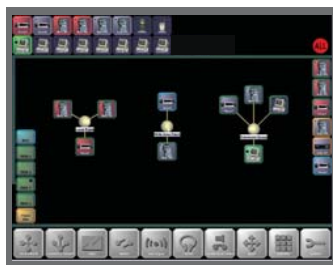
Remote LMR Control
(Server and Clients)
R-SFT-RCU

Radio Network Entry Points
(Customer Supplied with Power)

Please List
Radio Model and Make
Standard Cable Length: 6 -10 ft

- _____
- _____
- _____
- _____
- _____
- _____
- _____
- _____
- _____
- _____
- _____
- _____
- _____
- _____

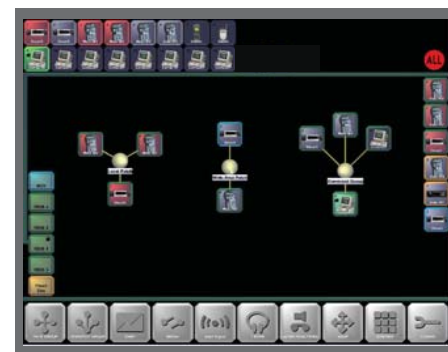
Out to Wide-Area
RIOS Locations



RIOS Wide-Area Network Module
R-SFT-MULTI

RIOS Client Computer Connection Port Package
R-SFT-CLNT-CP-PCK (7)

RIOS Client Application Software Included
R-SFT-CLNT-CP



RIOS can interface to all types of portable, mobile and fixed site (trunk or conventional) radio makes and models.

SyTech offers remote radio control for a variety of radios. Please discuss these options with a SyTech RIOS engineer.

To Antenna Bank
(Customer Supplied)

Items to be Confirmed (not inclusive):
Continuous Power to System
Available Rackspace: 3 - 6 units, minimum.
Acceptable signal strength and capacity at location
Antenna Equipment, Apparatus and Separation

SyTech Propriety

System Illustration: For System Comprehension Only

Actual Products, Configuration and Images May Change without Notification

Drawing may or may not be complete. Working drawing, not a final representation.