

Power



1. **Unlatch the hinges and open the case.**
2. **Remove the power supply from the lid organizer.**
3. **Attach the power supply to the rear DC power input.**
4. **Plug-in the AC connection to the appropriate AC source.**

**If operating on battery power, skip "Power" steps 2 - 4 and proceed to "Start Up".*

Start Up



1. **Extend the router antennas to the vertical position**
2. **Grasp the laptop corners** located closest to the case lid.
3. **Rotate the laptop** about the mounting bracket towards you.
4. Open the laptop lid and **power on the laptop.**



5. **Depress the TAC2 I/O Module power switch.**
6. **Test the radios** you wish to communicate through by first confirming "in band" communication. For example, transmitting and receiving between two UHF radios.

Connections



1. **Locate the correct RIOS Interface Cable.**
2. **Firmly connect the radio end** of the cable to the radio.
3. **Connect the RIOS Interface Cable** to the rear of the case.
4. Repeat "Connection" steps 1 - 3 for all desired radio channels.

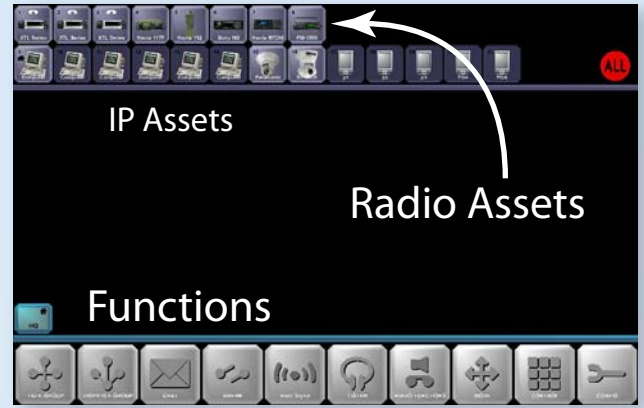
**Use RIOS Extension Cables to create the required radio separation, if necessary.*

1. Starting the RIOS Client Application



Launch the RIOS Client from the Desktop by double clicking on the RIOS Icon.

2. The RIOS GUI - Assets and Functions



The default User ID is "1". The RIOS GUI will appear similar as shown above.

The RIOS Three-Step Operational Pattern

- 1 Select the Function you wish to perform.
- 2 Select the Assets you wish to affect.
- 3 Deselect the SAME Function to confirm.

3. Monitoring an Asset



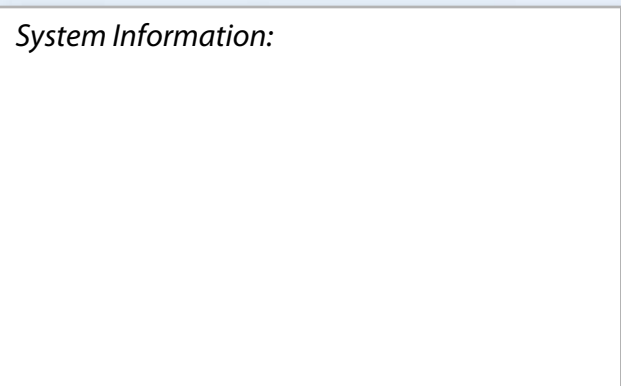
To discontinue monitoring an Asset, repeat using the Listen Function and selecting the Asset.

4. Creating a Patch



To remove the Patch, use the Break Function and the RIOS Three-Step Pattern. Select the yellow node to select the group.

System Information:



For additional RIOS GUI information, please see the RIOS Client Manual located behind the TAC2 lid organizer.