

SyTech RIOS Fixed-Site Installation: System Diagram

Catalog System - Ai16 Series

Included Support Items:

- Engineering Design
- Purchasing and Allocation
- Project Management
- Call Support
- One Year Parts Warranty

Recommend Support Items:

- On-Site Training
- Site Survey and Verification
- System Installation
- Server Installation
- Additional Installation
- Tone Control Interfacing
- Testing and Audio Matching
- IT Management

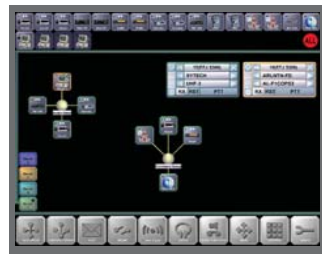
RIOS LITE require IP data connection and access to RIOS Server with a recommended public static IP address



RIOS Lite PDA Profile (1)
R-SFT-RL-PRO

RIOS Lite Connection Port (3)
R-SFT-RL-CP

Out to Wide-Area RIOS Locations



RIOS Wide-Area Network Module
R-SFT-MULTI

RIOS VPN Connection Port, Set Up and Support on Customer's Computer

RIOS Connection Port and VPN Access
R-SFT-VPN

1U Touchscreen Monitor, Keyboard and Mouse
R-MON-TS

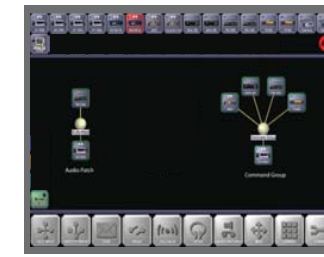
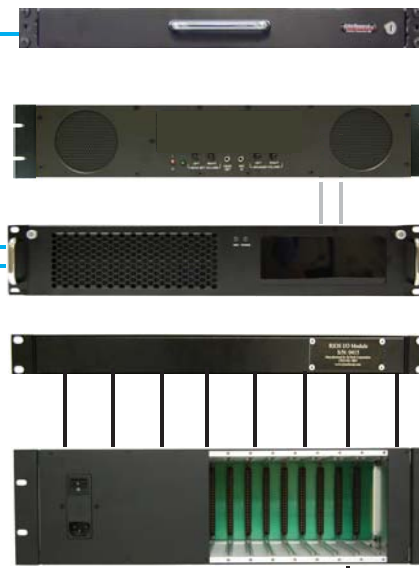
Shielded Speaker Module
R-SPK

RIOS SR-3000 Series Server
R-SERV-3000

RIOS Sixteen Port I/O Module
R-IOC-AI16

Tone Control 8-Card MultiChassis
R-TCI-8CH

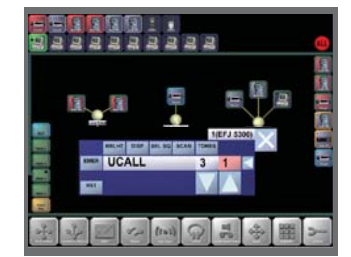
Items in Cyan are included with RIOS Fixed-Site Interoperability Package



RIOS Server Software with RIOS USID
R-SFT-USID



RIOS Recording and Archiving (Server Only)
R-SFT-REC



Remote LMR Control (Server and Clients)
R-SFT-RCU

Remote Radio Control Cables (r)
R-CAB-RCU

Standard Interface Cables - TBD (10)
R-CAB-S

OR

Radio Network Entry Points (Customer Supplied with Power)

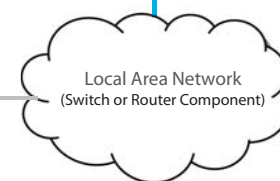
Please List Radio Model and Make
Standard Cable Length - 10 ft

1. _____
2. _____
3. _____
4. _____
5. _____
6. _____
7. _____
8. _____
9. _____
10. _____
11. _____
12. _____
13. _____
14. _____
15. _____
16. _____

RIOS can interface to all types of portable, mobile and fixed site (trunk or conventional) radio makes and models.

SyTech offers remote radio control for a variety of radios. Please discuss these options with a SyTech RIOS engineer.

To Antenna Bank (Customer Supplied)



Local Area Network (Switch or Router Component)

RIOS Workstation Client Package
R-CON-PCK1



*PC and Monitor Model May Vary

RIOS Ruggedized Notebook Workstation
R-CON-RNW

OR



CCU2 Desktop Audio Control Package
R-CON-CCU2-M

SyTech Propriety

System Illustration: For System Comprehension Only
Actual Products, Configuration and Images May Change without Notification
Drawing may or may not be complete. Working drawing, not a final representation.

Items to be Confirmed (not inclusive):
UPS Power to System
Available Rackspace: 9 - 11 units, minimum.
Acceptable signal strength and capacity at location
Antenna Equipment, Apparatus and Separation